

Merge eFilm Fusion PACS Integration Quick Reference

PowerScribe® 360 | Reporting (version 2.0 and higher) Optional Feature

NOTE: Nuance employees are not authorized to adjust or configure the settings on a customer's PACS. The customer, or the customer's PACS representative, must make any necessary changes to the PACS configuration or settings.

Feature Overview

NOTE: This integration operates in **Slave Mode only**.

- Single login/logout
- Mark exam as dictated/read
- Can launch a *PowerScribe 360 | Reporting* report using a PACS work list
- Can launch PACS images using a *PowerScribe 360 | Reporting* work list
- Can be installed on a different PC than the PACS/RIS
- Can be installed on the same PC as the PACS/RIS




Multiple Sites and Multiple Integrations

- If the system has multiple *sites* and the integration type is master, duplicate the master mode integration under each site. If the integration type is slave do not set up duplicate integrations under each site. Set up all slave integrations under the primary site (first site created). When a user logs in, no matter what site they are working under, the system will read the slave integrations created under the primary site and confirm the workstation is set up with the correct directory structures.
- If there are multiple *integrations* on a system, and more than one uses file drop integration such as XML, you will need to ensure that each file drop integration drops files into, or reads files from, separate sub folders under **c:\Nuance** on the client workstation.

For example, an organization using both GE and Hologic might consider using the following paths:

- C:\Nuance\GE\
■ C:\Nuance\Hologic\

Site PACS Settings

1. Go to **Setup > Sites > PACS** section.
2. Click the **Edit**  icon for the PACS you want to configure as Slave (or click the **Add**  icon to create a new PACS entry).
3. From the **Type** drop-down list, select **PowerScribe XML**.
4. In the **Name** field, type **PowerScribe XML**. (The **Description** field is optional.)
5. In the **Mode** field, select **Slave**.
6. In the **Slave** text field, enter **c:\nuance\study.xml;c:\nuance\status.xml;password=merge;multisite=all**.
Optional edit for multisite:
 - **thissite** - Only the configured site will be searched.
 - **selected** - Search will be based on the value selected in the site drop-down box in *PowerScribe 360 | Reporting*.
7. Click the **Save**  icon. Your entry should look like the example illustration below.

PACS:	Type	Name	Description	Mode
 	PowerScribe XML	PowerScribe XML		Slave: c:\nuance\study.xml;c:\nuance\status.xml;password=merge
				

Page 1

Additional Information from the Merge Fusion PACS User Guide

NOTE: The **PACS administrator or PACS representative must perform the steps shown in this section** (if they need to be performed).

The information in the remainder of this document is copied from Appendix E of the Merge Healthcare Merge PACS 6.4 System Manual and provided here as additional information.

Merge eFilm Fusion PACS Integration Quick Reference

PowerScribe® 360 | Reporting (version 2.0 and higher) Optional Feature

Appendix E. Creating a COM+ Application

On 64-bit Operating Systems, the auto-login into PS360 feature does not work properly because of an incompatibility between a 64-bit Viewer and 32-bit PowerScribe 360 clients. In order to address this issue, you must create a COM+ application that will facilitate the communication between the Viewer and PS360 client installation.

To create a COM+ application:

1. On the Merge PACS Server, go to **Control Panel** → **Administrative Tools** → **Component Services**.
2. In the left-hand panel, expand **Computers** → **My Computer**, right-click on **COM+ Application** and select **New** → **Application** from the pop-up menu, as in the following example:

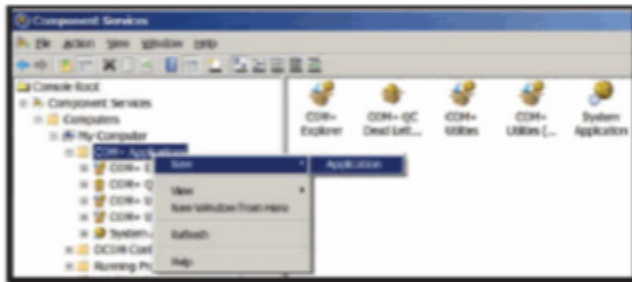


Figure E-179: Adding a New COM+ Application

The **COM + Application Install Wizard** is launched.

3. Click on **Create an empty application**.

The **Create Empty Application** screen is displayed, as in the following example:

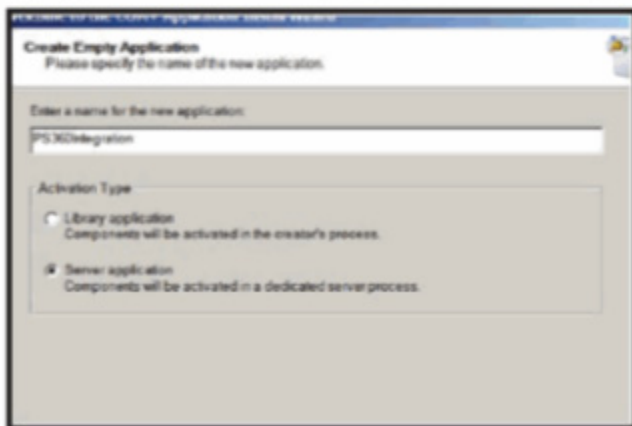


Figure E-180: Creating an Empty Application

Merge eFilm Fusion PACS Integration Quick Reference

PowerScribe® 360 | Reporting (version 2.0 and higher) Optional Feature

4. Provide a name for the application (as an example PS360Integration), make sure that the **Server application** option is selected, and click on the **Next** button.

*The **Set Application Identity** screen is displayed, as in the following example:*

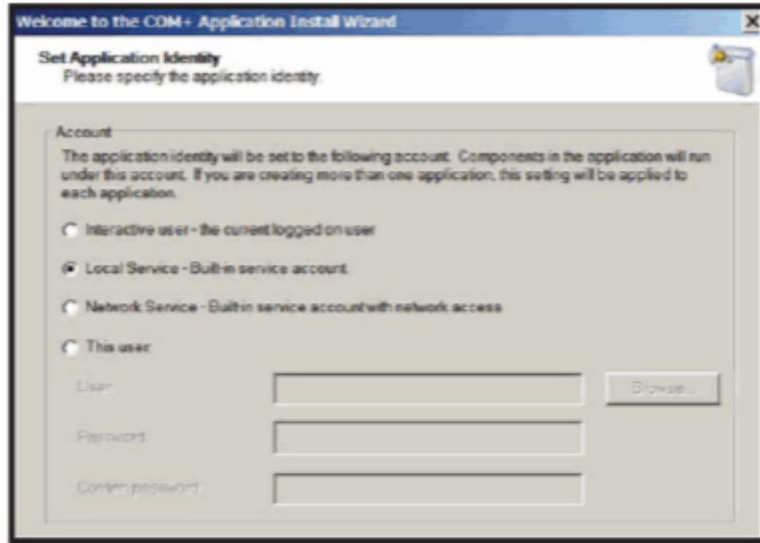


Figure E-181: Setting Application Identity

5. Make sure that the **Local Service** option is selected and click on the **Next** button.

*The **Add Application Roles** screen is displayed.*

6. Click the **Next** button.

*The **Add Users to Roles** screen is displayed.*

7. Click the **Next** button, followed by the **Finish** button.

The new application will be displayed in the list of COM+ applications.

8. Expand the new COM+ application, right-click on **Components** and select **New** → **Component** from the pop-up menu, as in the following example:

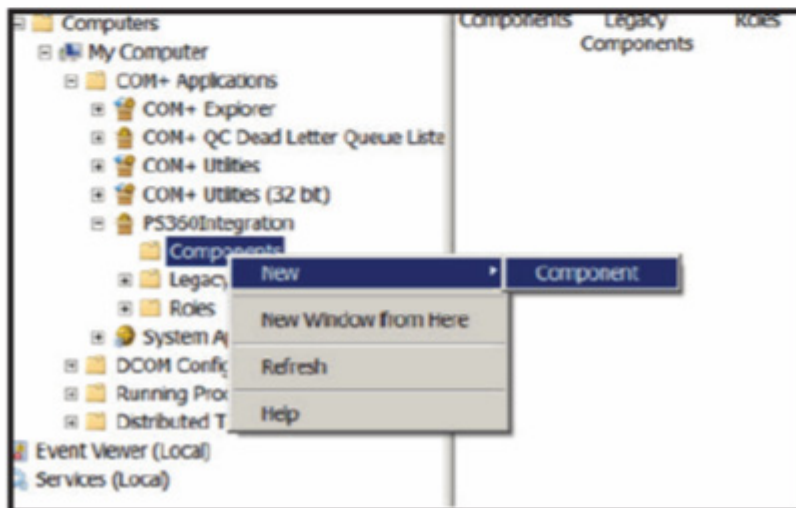


Figure E-182: Adding a New Component

Merge eFilm Fusion PACS Integration Quick Reference

PowerScribe® 360 | Reporting (version 2.0 and higher) Optional Feature

- Click on **Import component(s)** that are already registered.

The **Choose Components to Import** screen will be displayed, with a list of all the registered COM Components, as in the following example:

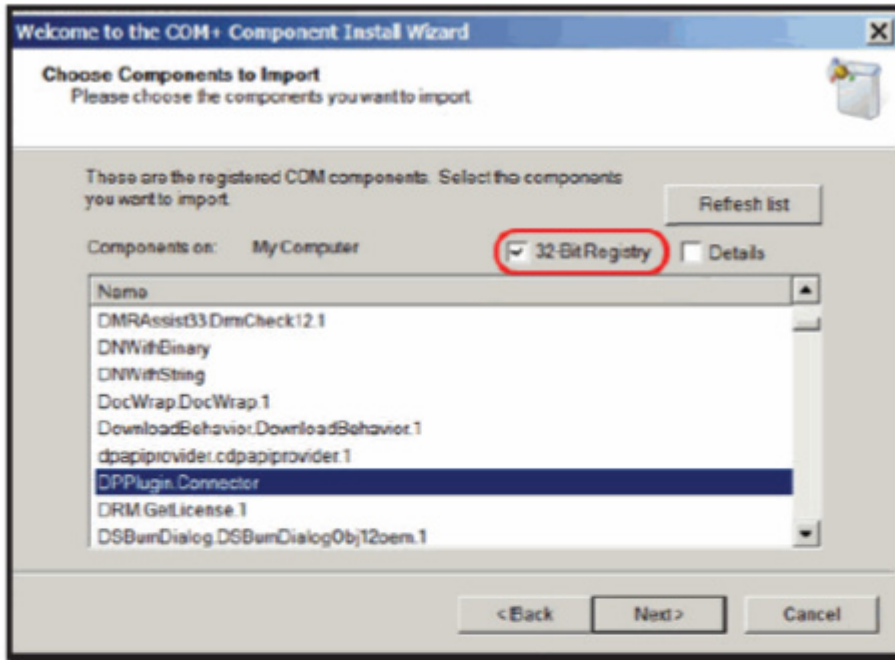


Figure E-183: Choosing Components to Import

- Make sure that **Enable 32-bit Registry** is enabled, select **DPPlugin.Connector** and click on the **Next** button.
- Click the **Finish** button.
- In the right-hand panel, right-click on **PS360Integration** application and select **Properties** from the pop-up menu, as in the following example:

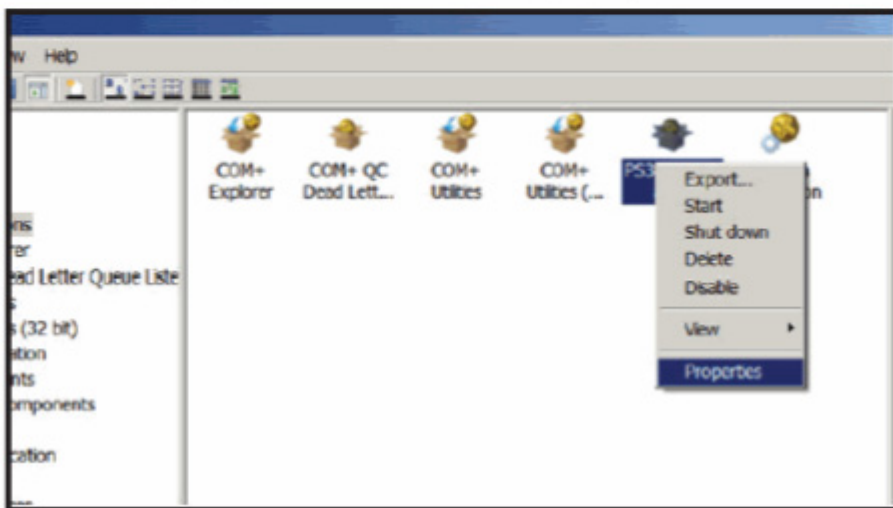


Figure E-184: Accessing Properties of New COM+ Application

The **PS360Integration Properties** window is displayed.

Merge eFilm Fusion PACS Integration Quick Reference

PowerScribe® 360 | Reporting (version 2.0 and higher) Optional Feature

13. Click on the **Security** tab and make sure that **Enforce access checks for this application** is not selected, as in the following example:

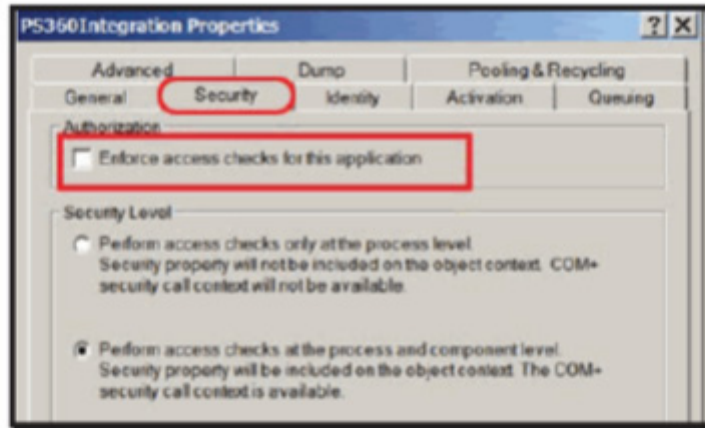


Figure E-185: Disabling Enforced Access Checks

14. Click on the **Advanced** tab and make sure that **Leave running when idle** is selected, as in the following example:

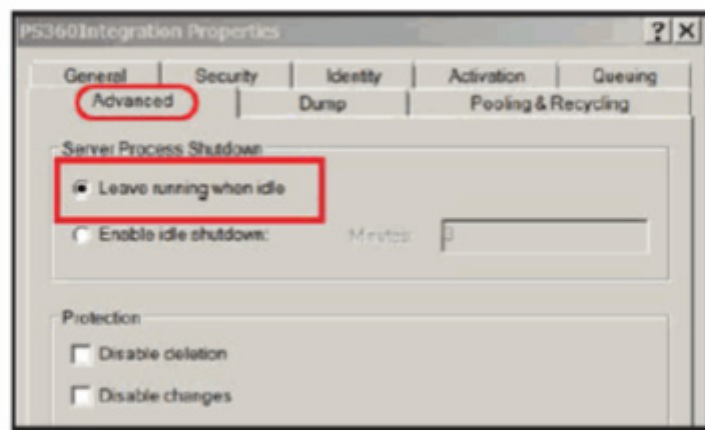


Figure E-186: Leave Running When Idle

15. Close the Properties dialog.
16. Right-click on **PS360Integration** application and select **Start** from the pop-up menu, as in the following example:

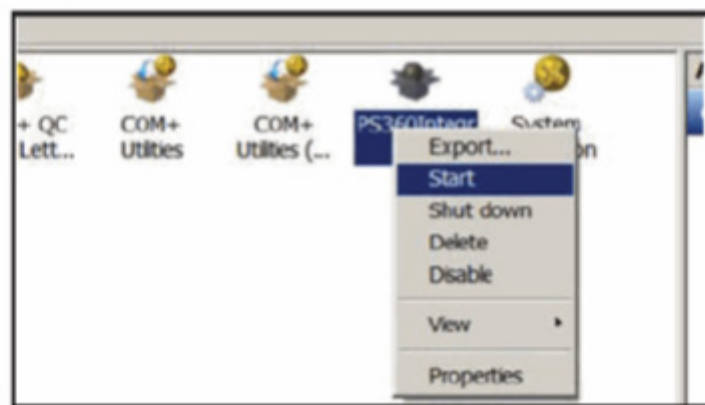


Figure E-187: Starting the New COM+ Application

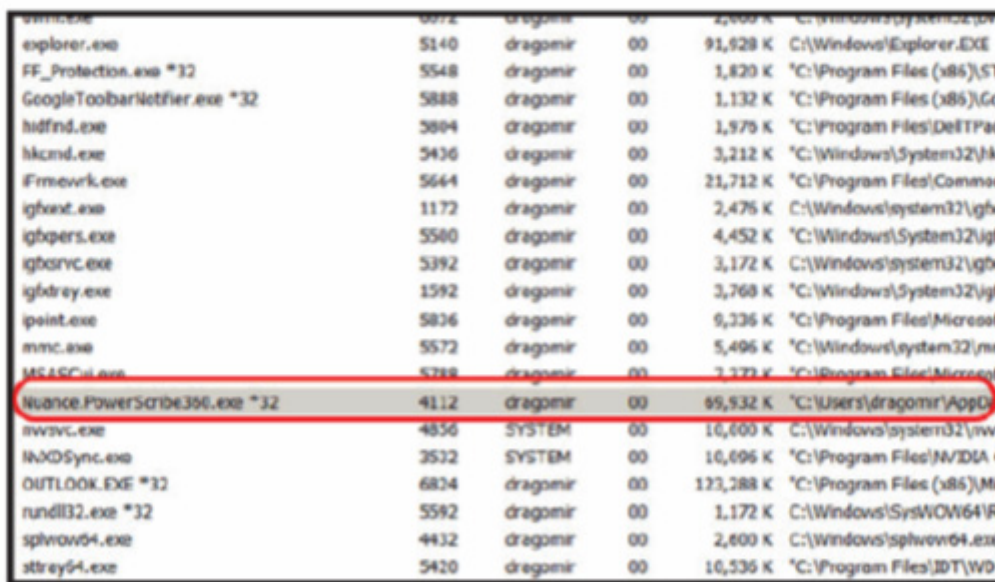
Merge eFilm Fusion PACS Integration Quick Reference

PowerScribe® 360 | Reporting (version 2.0 and higher) Optional Feature

The COM+ application will start and the icon associated with it will flicker to indicate that it is running.

17. Log into the PS360 client directly using powerscribe/powerscribe credentials or any active credentials and verify that the authentication works
18. Log out and log into PS360 from within Halo to verify that the authentication works.

NOTE: For troubleshooting purposes, the PS360 client process should be displayed in Task Manager as in the following example:



smn.exe	6872	dragonir	00	2,600 K	C:\Windows\system32\sv
explorer.exe	5140	dragonir	00	91,928 K	C:\Windows\Explorer.EXE
FF_Protection.exe *32	5548	dragonir	00	1,820 K	*C:\Program Files (x86)\ST
GoogleToolbarNotifier.exe *32	5888	dragonir	00	1,132 K	*C:\Program Files (x86)\Go
hidfnl.exe	3894	dragonir	00	1,976 K	*C:\Program Files\DeLTPa
hkcmd.exe	5436	dragonir	00	3,212 K	*C:\Windows\System32\hk
frmevrk.exe	5644	dragonir	00	21,712 K	*C:\Program Files\Comma
igbent.exe	1172	dragonir	00	2,476 K	C:\Windows\system32\igb
igbpcrs.exe	5580	dragonir	00	4,452 K	*C:\Windows\System32\igf
igbsvc.exe	5392	dragonir	00	3,172 K	C:\Windows\system32\igb
igbtrey.exe	1592	dragonir	00	3,768 K	*C:\Windows\System32\igf
ipoint.exe	5826	dragonir	00	9,236 K	*C:\Program Files\Microsof
mnc.exe	5572	dragonir	00	5,496 K	*C:\Windows\system32\mi
MCASCSi.exe	5788	dragonir	00	7,772 K	*C:\Program Files\Microsof
Nuance.PowerScribe360.exe *32	4112	dragonir	00	65,932 K	*C:\Users\dragonir\AppData
nvsvc.exe	4856	SYSTEM	00	16,600 K	C:\Windows\system32\nv
NVDSync.exe	3532	SYSTEM	00	16,696 K	*C:\Program Files\NVIDIA
OUTLOOK.EXE *32	6824	dragonir	00	123,288 K	*C:\Program Files (x86)\Mi
rundll32.exe *32	5592	dragonir	00	1,172 K	C:\Windows\SysWOW64\I
sphview64.exe	4432	dragonir	00	2,600 K	C:\Windows\sphview64.exe
strey64.exe	5420	dragonir	00	16,536 K	*C:\Program Files\JDT\WD

Figure E-188: Starting the New COM+ Application