

Philips iSite Integration Quick Reference Card

PowerScribe® 360 | Reporting Desktop Client Integration

NOTE: Nuance employees are not authorized to adjust or configure the settings on a customer's PACS. The customer, or the customer's PACS representative, must make any necessary changes to the PACS configuration or settings.

Feature Overview

In **Master** mode:

- Mark exam as dictated/read
- Launch PACS images using PowerScribe 360 | Reporting work list
- Launch PowerScribe 360 | Reporting report using PACS work list
- Can be installed on same PC as PACS/RIS

In **Slave** mode:

- Application launch
- Single login/logout
- Mark exam as dictated/read

Multiple Sites and Multiple Integrations

- If the system has multiple *sites* and the integration type is master, duplicate the master mode integration under each site. If the integration type is slave do not set up duplicate integrations under each site. Set up all slave integrations under the primary site (first site created). When a user logs in, no matter what site they are working under, the system will read the slave integrations created under the primary site and confirm the workstation is set up with the correct directory structures..
- If there are multiple *integrations* on a system, and more than one uses file drop integration such as XML, you will need to ensure that each file drop integration drops files into, or reads files from, separate sub folders under **c:\Nuance** on the client workstation.

For example, an organization using both GE and Hologic might consider using the following paths:




- C:\Nuance\GE\
- C:\Nuance\Hologic\




NOTE: The Philips Advanced Visualization Tool plug-in, used in combination with Philips iSite and PowerScribe 360 | Reporting, was causing Client Workstation lockups. Customers using the Advanced Visualization plug-in should obtain Version 7.4.6.510 or later, available from Philips. If the Advanced Visualization plug-in version is an earlier version but is not being used, the customer should remove that plug-in to eliminate lockups as well.

Philips iSite Integration Quick Reference Card

PowerScribe® 360 | Reporting Desktop Client Integration

Site PACS Settings

1. Go to **Setup > Sites > PACS** section.
2. Click the **Edit**  icon for the PACS you want to configure as Master (or click the **Add**  icon to create a new PACS entry).
3. From the **Type** drop-down list, select **RadWhere ActiveX**.
4. In the **Name** field, type **Philips**. (The **Description** field is optional.)
5. In the **Mode** field, select **Master**.
6. In the **Master** text field, enter **http://localhost:8080**.
7. Click the **Save**  icon. Your entry should look like the example illustration below.

PACS:	Type	Name	Description	Mode
 	RadWhere ActiveX	Philips		Master:http://localhost:8080
				

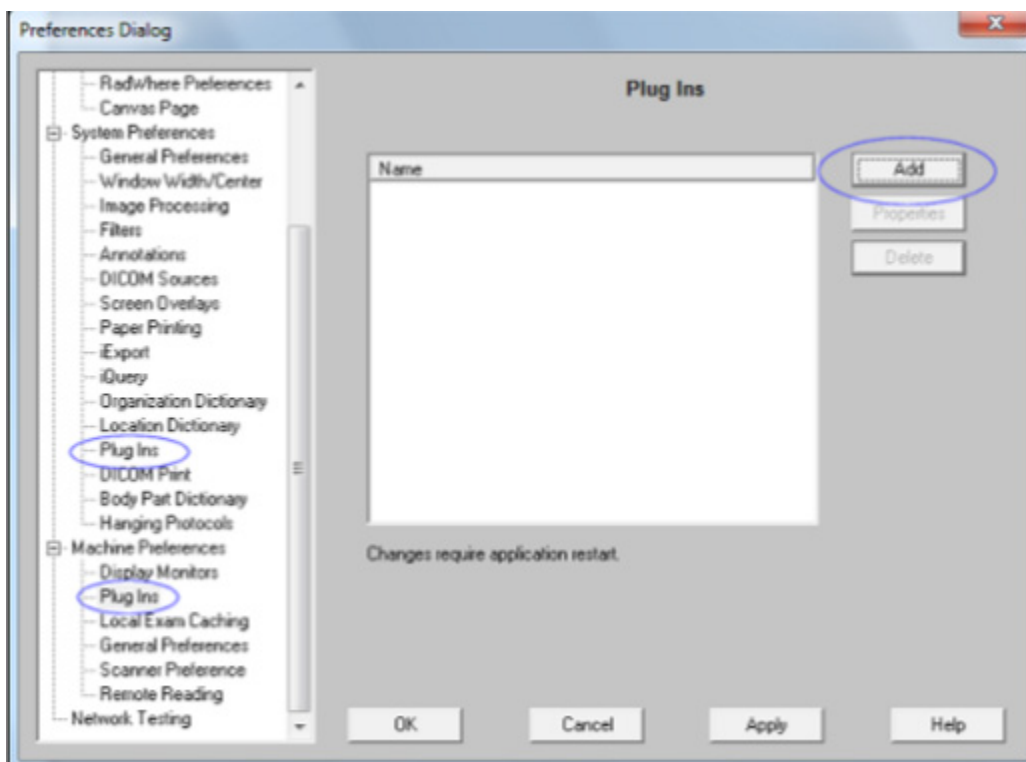
Page 1

Install and Configure Philips iSite Plug-in

NOTE: The PACS administrator or PACS Representative must perform the following procedure.

Perform the following steps to set up PowerScribe 360 | Reporting for the iSiteRadiology integration.

1. Log on to iSite Radiology.
2. Click the **P** icon in the upper-right corner of the window to open the **Preferences** dialog box.
3. Install the plug-in as either a System or Machine plug-in, but not both:
 - **System** plug-ins are installed **once** for **all** workstations using the iSite server.
 - If you do not want the plug-in available on all of the workstations, you must install the plug-in as a **Machine** plug-in for **each workstation** that needs access to the *PowerScribe 360 | Reporting* integration.



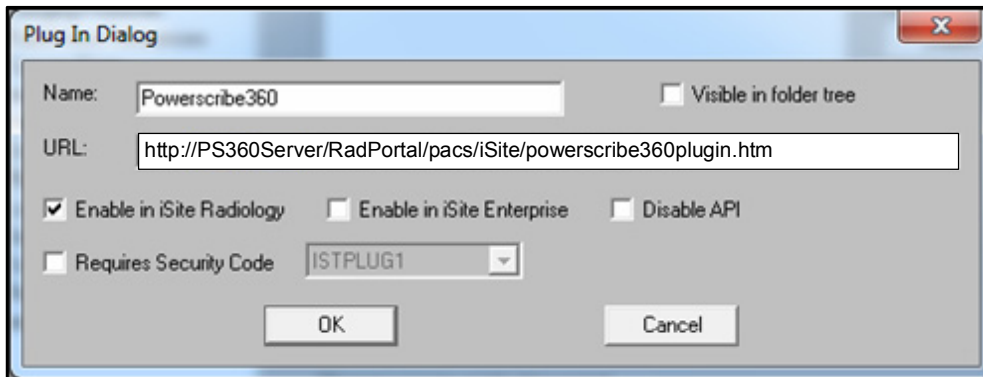
Philips iSite Integration Quick Reference Card

PowerScribe® 360 | Reporting Desktop Client Integration

Install and Configure Philips iSite Plug-in (cont.)

4. After making your selection (**System** or **Machine** plug-in), click **Add**.

The following dialog box opens.



5. Select (place a check mark in) the **Enable in iSite Radiology** check box.
Note: iSite Enterprise is not supported.
 6. Clear (remove the check mark from) the **Disable API** check box.
 7. The plug-in is located on the *PowerScribe 360 | Reporting* Administrator Portal Web site in a subfolder named **pacs/isite**. In the example dialog box above, the host name is **PS360Server**.
 8. Click **OK** to add this plug-in. You are returned to the previous dialog box.
 9. Click **OK**.
 10. Log out of iSite and log in again before continuing to effect the changes.
-

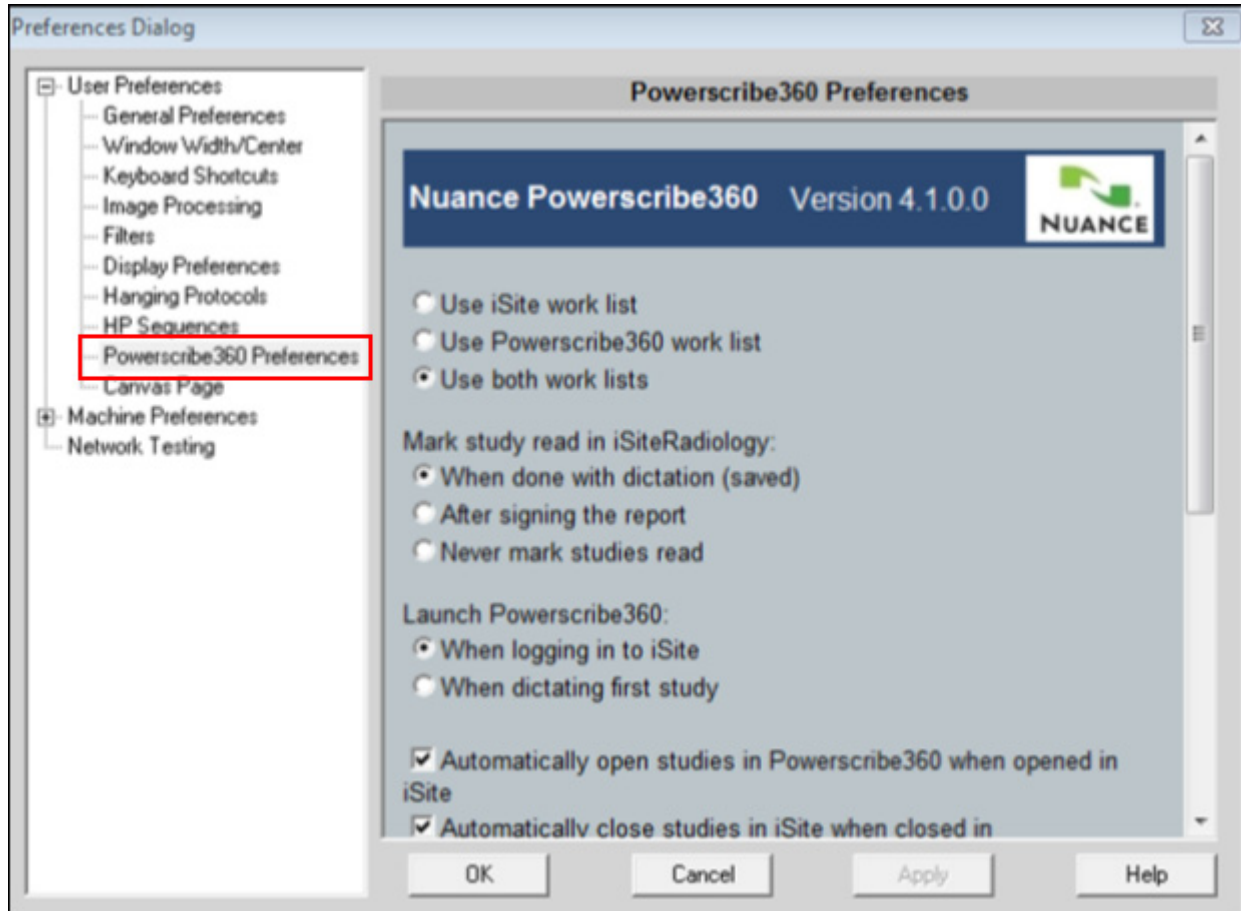
Philips iSite Integration Quick Reference Card

PowerScribe® 360 | Reporting Desktop Client Integration

User Setup

For each iSite user:

1. Log on to iSite and go to the **Preferences Dialog** window by clicking on the **P** icon in the upper right corner of the main window.
2. Under **User Preferences**, select **PowerScribe360 Preferences** to open the **Powerscribe360 Preferences** window.
3. Select the preferences you want to use for this site.



Philips iSite Integration Quick Reference Card

PowerScribe® 360 | Reporting Desktop Client Integration

User Setup (cont.)

IMPORTANT: To automatically open studies in iSite when running in Master mode, there is a *PowerScribe 360 | Reporting* user option (**Tools > Preferences > Reporting**) that you must select in order to launch the study when the report is created or opened in *PowerScribe 360 | Reporting*.

The following illustration shows the **Preferences** dialog box in the *PowerScribe 360 | Reporting* client software.

