



PowerMic II Getting Started Guide

Dragon® Medical

Version 10.0



Trademarks

Nuance[®], the Nuance logo, Dictaphone[®], Dragon[®], DragonBar[™], the Dragon logo, and NaturallySpeaking[®] are trademarks or registered trademarks of Nuance Communications, Inc. or its affiliates in the United States and/or other countries. All other trademarks referenced herein are trademarks or registered trademarks of their respective owners.

Copyright Notice

This manual is copyrighted and all rights are reserved by Nuance Communications, Inc. No part of this publication may be reproduced, transmitted, transcribed, stored in a retrieval system, or translated into any language or computer language, in any form or by any means, electronic, mechanical, magnetic, optical, chemical, manual, or otherwise, without the prior written permission of Nuance Communications, Inc., 1 Wayside Road, Burlington, MA 01803.

Copyright © 2009 Nuance Communications, Inc. All rights reserved.

Patents

The PowerMic II product is the subject of pending U.S and foreign patent applications.

Disclaimer

Nuance makes no warranty, express or implied, with respect to the quality, reliability, currentness, accuracy, or freedom from error of this document or the product or products referred to herein and specifically disclaims any implied warranties, including, without limitation, any implied warranty of merchantability, fitness for any particular purpose, or non-infringement. Nuance disclaims all liability for any direct, indirect, incidental, consequential, special, or exemplary damages resulting from the use of the information in this document. Mention of any product not manufactured by Nuance does not constitute an endorsement by Nuance of that product.

Published by Nuance Communications, Inc.
Burlington, Massachusetts, USA

Visit Nuance Communications, Inc. on the Web at www.nuance.com.

Contents

| | |
|---|----|
| Dragon Medical Version | 2 |
| PowerMic II Illustration | 2 |
| Adding a Dictation Source for the PowerMic II | 3 |
| Using the PowerMic II | 6 |
| Dictating with the PowerMic II | 6 |
| Using the PowerMic II as a Mouse | 6 |
| Scanning Barcodes with your PowerMic II | 7 |
| Reassigning the PowerMic II Buttons | 8 |
| Using the Buttons with DragonTemplates | 9 |
| Using the Buttons to Tab Within an Application | 10 |
| Using a Button to Delete the Last Word | 11 |
| Using a Button to Turn Hidden Mode On or Off | 12 |
| Changing the Dictate Button to a Microphone On/Off Button | 13 |

Getting Started with the PowerMic II and Dragon Medical, Version 10.0

Objectives


The instructions in this document are designed for the experienced *Dragon Medical* user who is about to start using the *PowerMic II*, as well as trainers who will be assisting *Dragon Medical* users with this microphone.

This document covers the following topics:

- Adding a dictation source for the *PowerMic II*
- Using the *PowerMic II* to dictate, say commands, and to function as a mouse
- Customizing the *PowerMic II* buttons to do the following tasks:
 - Navigating in a Dragon Template
 - Tabbing within an application
 - Deleting the last word
 - Turning hidden mode on and off
 - Turning the microphone on by pressing and releasing (rather than holding in) a button

Dragon Medical Version

These instructions apply *only* to version 10.0 of *Dragon Medical*. If you are using version 10.1, please refer to document L-3271-002. If you are using version 9.x or lower, you need to upgrade to version 10 to take advantage of most of the features of the *PowerMic II*.

 **Note:** The *Dragon Medical Version 10 Provider Packet* (part number L-3243-002) has two pages on the *PowerMic II*. One shows the default settings, and one has blanks where you can write in your custom settings.

PowerMic II Illustration



Adding a Dictation Source for the PowerMic II

Before you can use all of the features of the *PowerMic II*, you must add a new dictation source to your user file.

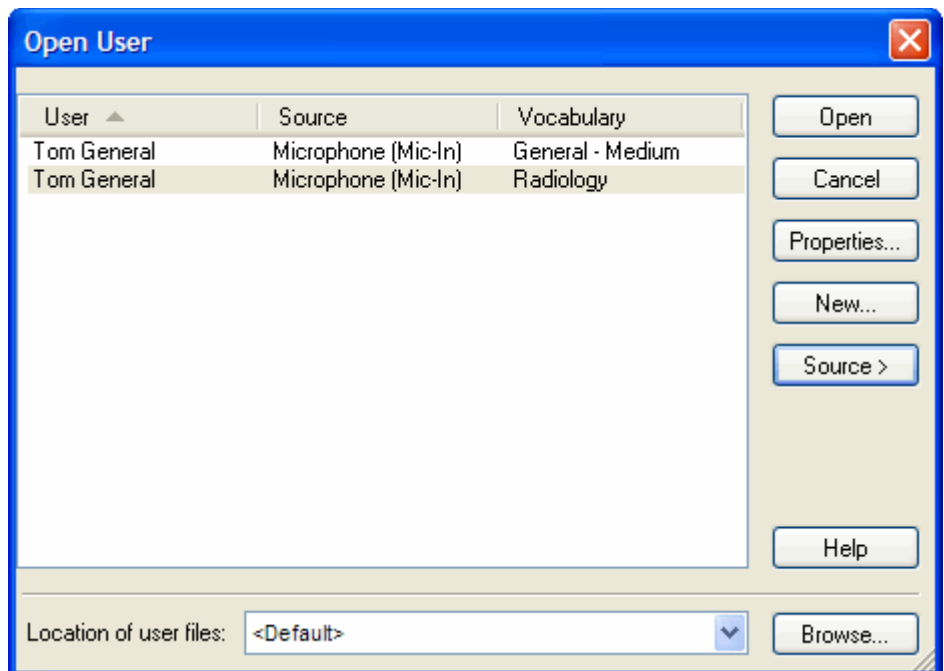
To add a dictation source for the PowerMic II:

1. Plug the *PowerMic II* into any USB port on your computer.



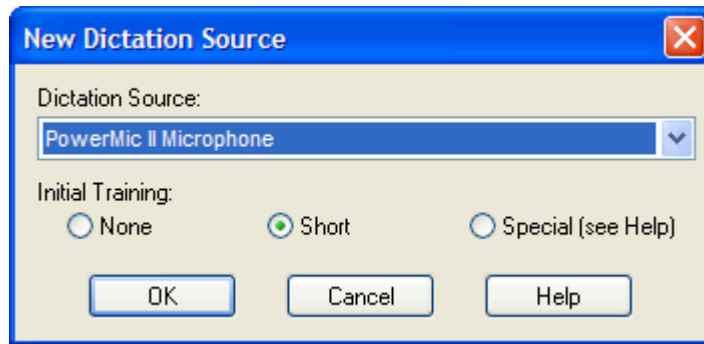
Note: *If you are using a tablet PC, plug the PowerMic II directly into the tablet rather than the docking station so that you can continue using the microphone if you undock the tablet.*

2. Wait for the **Your new hardware is ready to use** message to appear. (If you see a message asking you to reboot Windows, click **No.**)
3. Start *Dragon Medical* if it is not already running.
4. If the **Open User** dialog box doesn't appear, on the **DragonBar** click **Dragon > Open User**. The **Open User** dialog box opens.



5. Select the correct user name. (If you have more than one vocabulary, it doesn't matter which one you select.)

- Click **Source > New**. The **New Dictation Source** dialog box opens.

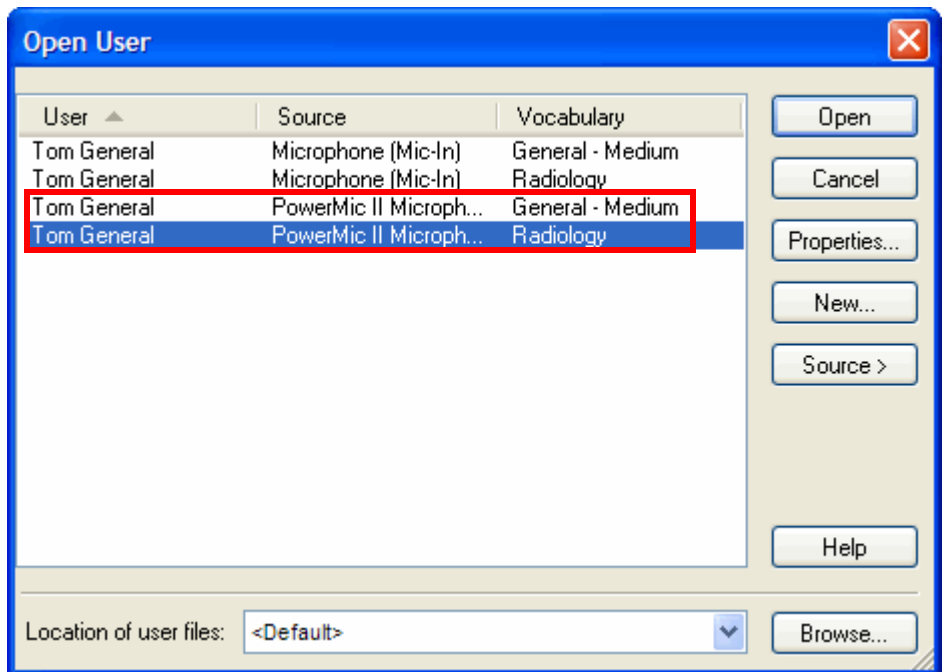


- If the **Dictation Source** does not automatically select the *PowerMic II*, choose it from the drop-down list.



Note: If you don't see the PowerMic II on the menu, close this dialog box, make sure the microphone is firmly plugged in, and wait for Windows to finish detecting it. Then try again.

- Click **OK**. You should now see your user name twice in the **Open User** dialog box. (If you have two vocabularies and two dictation sources, you'll see four entries because there are four possible combinations.) You haven't created a new user file, you've added a dictation source to the existing user file. That means your custom words and commands will still work with the new microphone.



9. Select your *PowerMic II* user and click **Open**. Since this is a new dictation source, you now have to run the **Audio Setup Wizard** and the **General Training**.
10. Hold the *PowerMic II* in one hand. Note that the microphone element is in the foam-covered indentation at the top end of the device. Make sure the microphone element is 1 to 3 inches from the side of your mouth, and try to keep its position fairly consistent. The microphone is not designed to lie on the table.



Note: During the **Audio Setup Wizard** and the **General Training**, do not press any of the buttons on the *PowerMic II*. *Dragon Medical* automatically starts listening when you click the **Start** or **Go** button on each of the dialog boxes.

Using the PowerMic II

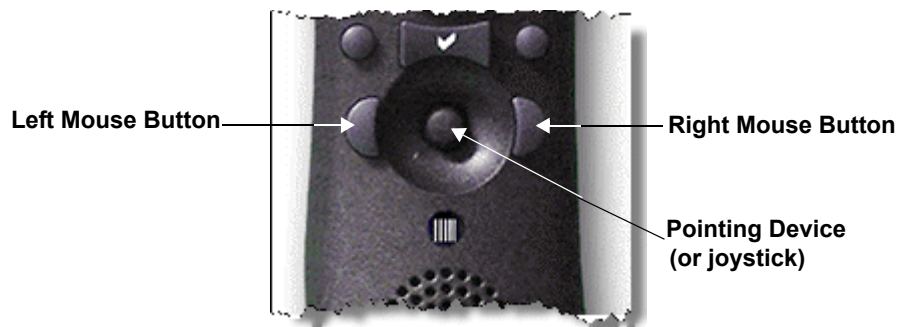
Dictating with the PowerMic II

When you finish the **General Training**, you can begin using the *PowerMic II*.

Hold in the **Dictate** button while you are speaking and release it when you are done. Make sure that you press the button in completely before you start talking. Otherwise *Dragon Medical* will cut off the beginning of your dictation.

Using the PowerMic II as a Mouse

Your *PowerMic II* can also function as a mouse. There are three controls on the front and one on the back of the microphone that allow you to perform common mouse functions.




Pointing Device: Use this control to move your mouse cursor. This button is very similar to the control seen on many notebook-style computers.


Left/Right Mouse Buttons: These buttons perform the same functions as your left and right mouse buttons.

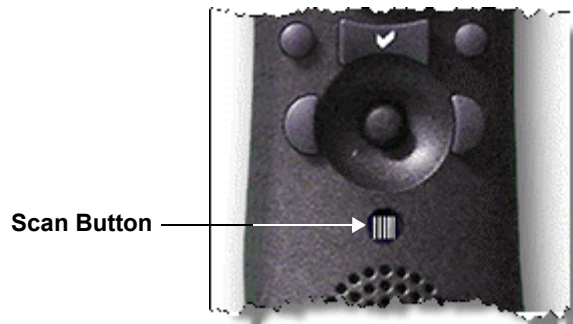
Trigger on back of microphone: This button functions as a left mouse button as well, so you can drag objects by holding in the trigger while you move the pointing device. (See illustration on [page 2](#).)

Scanning Barcodes with your PowerMic II

 **Note:** To determine whether your PowerMic II is equipped with a scanner, look on the back of the PowerMic II (near the top) for a red plastic semicircle and a caution regarding the scanner's laser. Refer to the illustration on [page 2](#).

Pressing and releasing the small button directly below the pointing device activates the PowerMic II barcode scanner (located on the back of the microphone). When the barcode scanner detects a valid barcode, Dragon Medical converts the barcode into text and sends it to the active application.

 **Note:** If your PowerMic II is not equipped with a scanner, pressing this button does nothing.




Reassigning the PowerMic II Buttons


Dragon Medical assigns a default group of settings for your *PowerMic II* buttons. You can customize how these buttons function.

To customize the buttons on your PowerMic II:

- On the **DragonBar**, click **Tools > Options** and select the **PowerMic II** tab.


 **Note:** If you don't see the *PowerMic II* tab, on the *DragonBar*, click **Dragon > Open User** and make sure you selected the *PowerMic II* dictation source when you opened your user file.



 **Note:** If you want to customize a button and don't know its name, either click a button on the picture in the dialog box or press the button on the microphone itself. Dragon Medical then highlights the correct menu item.

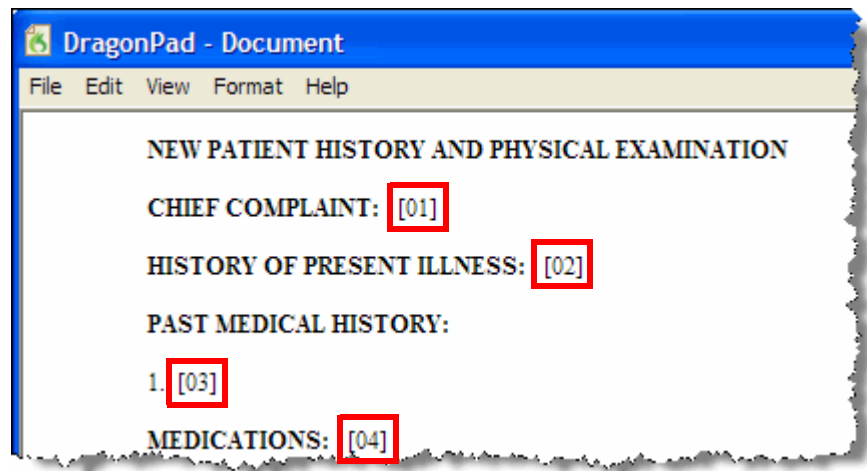
Using the Buttons with DragonTemplates

You can use the *PowerMic II* to navigate through the fields in a **DragonTemplate**, once you customize the buttons to do so. If you're not familiar with **DragonTemplates**, read about them in the *Dragon Medical* help or the *Dragon Medical Version 10 Provider Packet*.

 **Note:** *DragonTemplates* do not work in the Add Note field in *AHLTA* versions earlier than 3.3. They do work in other text fields in *AHLTA*, and they also work in *Essentris*, *CPRS*, *RPMS*, and any other application in which the *Select-and-Say* indicator turns green.

To assign buttons for use in DragonTemplates:

1. If you don't have a **DragonTemplate**, create one.
 - You can edit an existing **Text & Graphics** command and put square brackets ([]) around any text whose value is likely to change from patient to patient. (See illustration below.)



- See the *Dragon Medical Version 10 Provider Packet* for more complete instructions on creating a **DragonTemplate**, including an example.
2. On the **DragonBar**, click **Tools > Options** and select the **PowerMic II** tab.
 3. From the **Rewind** drop-down list, select **Navigation > Select previous variable field**.

4. From the **Fast Forward** drop-down list, select **Navigation > Select next variable field**.
5. From the **Stop/Play** drop-down list, select **Navigation > Clear delimiting characters**.
6. Click **OK** to save your changes.

To use your PowerMic II in a DragonTemplate:

1. Say the voice command that inserts the **DragonTemplate** into your note.
2. Press the **Fast Forward** button to select the first field.
3. Press and hold the **Dictate** button and dictate the value for that field.
4. Continue alternately pressing **Fast Forward** and dictating the field values. You can skip over the fields where you want to keep the default values.
5. If you skip a field and need to go back, press **Rewind**.
6. When you are done filling in the template, if any brackets remain, press **Stop/Play** to erase the brackets.

Using the Buttons to Tab Within an Application

In any application where you can press the **Tab** key on your keyboard to move from field to field (such as in an Essentris template or an Outlook email message), you can use the **Tab Forward** button on the *PowerMic II* to navigate.

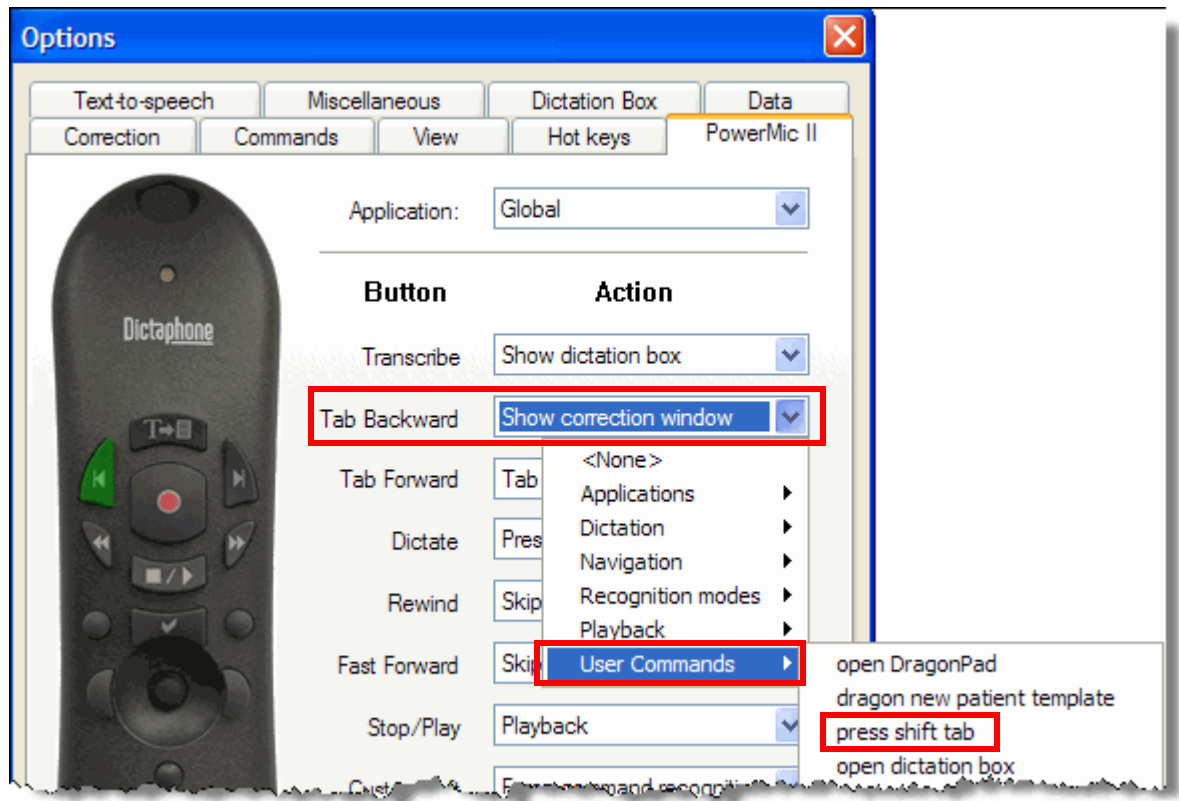


Note: You cannot generally use a **Tab** key to navigate in *AHLTA*, not even in the currently available *AIM* forms.

If you would also like to be able to use the **Tab Backward** button to move backward from field to field, you need to set this button to execute the “**Press Shift Tab**” voice command.

To assign the Tab Backward button:

1. Press and hold the **Dictate** button on your *PowerMic II* and say “**Press Shift Tab**.” This places the **press shift tab** command onto the **User Commands** list, which is a list of recently used voice commands.
2. On the **DragonBar**, click **Tools > Options** and select the **PowerMic II** tab.
3. From the **Tab Backward** drop-down list, select **User commands**. From this list you can see up to 20 commands that you recently dictated.



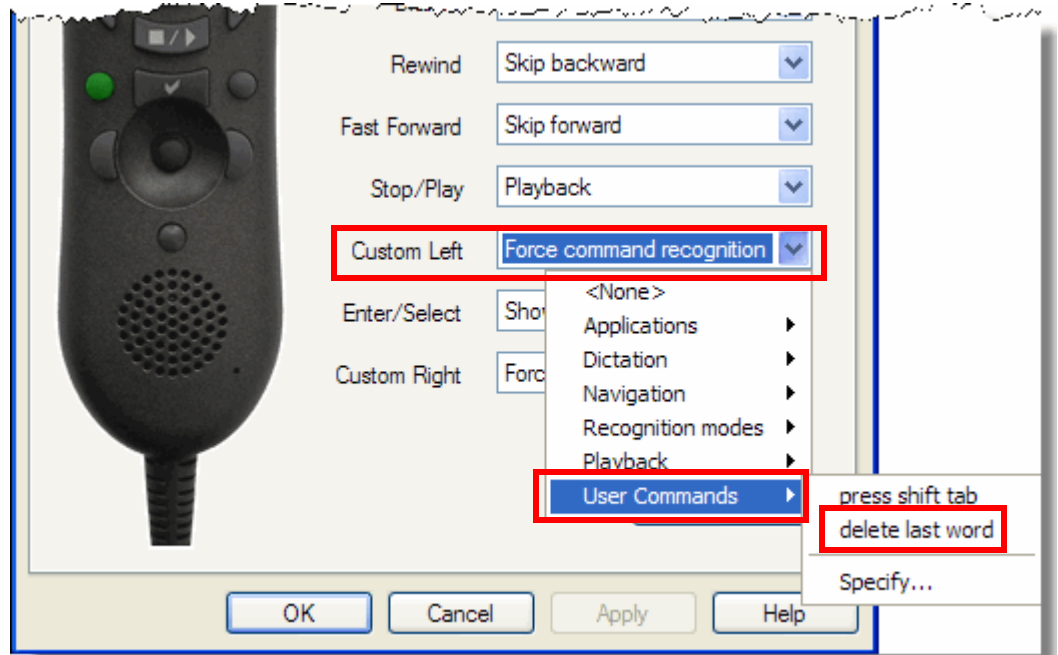
4. From the **User commands** list, select **press shift tab**.
5. Click **OK** to save your changes.

Using a Button to Delete the Last Word

Instead of using the voice command “**delete last word**,” you can assign a *PowerMic II* button to delete the last word from your text.

To assign a button to execute the “delete last word” voice command:

1. In any application, dictate any text.
2. Say “**delete last word**.” This places the **delete last word** command onto a list of recently used commands.
3. On the **DragonBar**, click **Tools > Options** and select the **PowerMic II** tab.
4. Select the button you want to use. For this example, use the **Custom Left** button.



5. From the **Custom Left** drop-down list, select **User commands**. From this list you can see up to 20 commands that you recently dictated.
6. From the **User commands** list, select **delete last word**.
7. Click **OK** to save your changes.



Tip: To delete multiple words, press the PowerMic II button more than once.

Using a Button to Turn Hidden Mode On or Off

In **Hidden Mode**, *Dragon Medical* captures and stores dictation without immediately placing it into the application. This allows you to view other windows or applications while dictating. When you are done dictating, transfer the text into the note and then turn **Hidden Mode** off (switch back to **Normal Mode**). See the *Dragon Medical* online help for more information on **Hidden Mode**.

You have to set this button twice, once for each application context (**Global** and **Dictation Box**). This is because when *Dragon Medical* is in **Hidden Mode**, it is in the **Dictation Box** application.

To set a PowerMic II button to turn Hidden Mode on and off:

1. In any application, say “**switch to normal mode.**” This places the **switch to normal mode** command onto the list of recently used commands.

2. On the **DragonBar**, click **Tools > Options** and select the **PowerMic II** tab.
3. Select the button you want to use. For this example, use the **Custom Right** button.
4. From the **Custom Right** drop-down list, select **Recognition modes > Hidden Mode on/off**.
5. From the **Application** drop-down list, select **Dictation Box**.
6. Select the **Custom Right** button again.
7. From the **Custom Right** drop-down list, select **User commands**. From this list you can see up to 20 commands that you recently dictated.
8. From the **User commands** list, select **switch to normal mode**.
9. Click **OK** to save your changes.

To use the Hidden Mode button on your PowerMic II:

1. Press the **Custom Right** button on the *PowerMic II* to go into **Hidden Mode**. Notice that the **Select and Say** indicator light on the **DragonBar** turns yellow, indicating that you are now in **Hidden Mode**.
2. Dictate some text. You can navigate to other screens or applications as you dictate (for example, you can look up lab results, view images, or search the Web for information).
3. When you are done dictating, place the cursor where you want the text to appear.
4. Press **Transcribe**. The text appears at the cursor location you selected.
5. To turn off **Hidden Mode**, press the **Custom Right** button again. The **Select and Say** indicator on the **DragonBar** turns green, indicating that you are now back in **Normal Mode**.

Changing the Dictate Button to a Microphone On/Off Button

If you find that your thumb gets tired from holding down the **Dictate** button, you can change the **Dictate** button from a press-to-talk button to a microphone on/off (toggle) button.

1. On the **DragonBar**, click **Tools > Options** and select the **PowerMic II** tab.
2. From the **Dictate** button drop-down list, select **Dictation > Microphone on/off**.
3. Click **OK** to save your changes.

Now you can press and release the **Dictate** button to turn the microphone on. Just remember that you must press and release the **Dictate** button again to turn it off.

